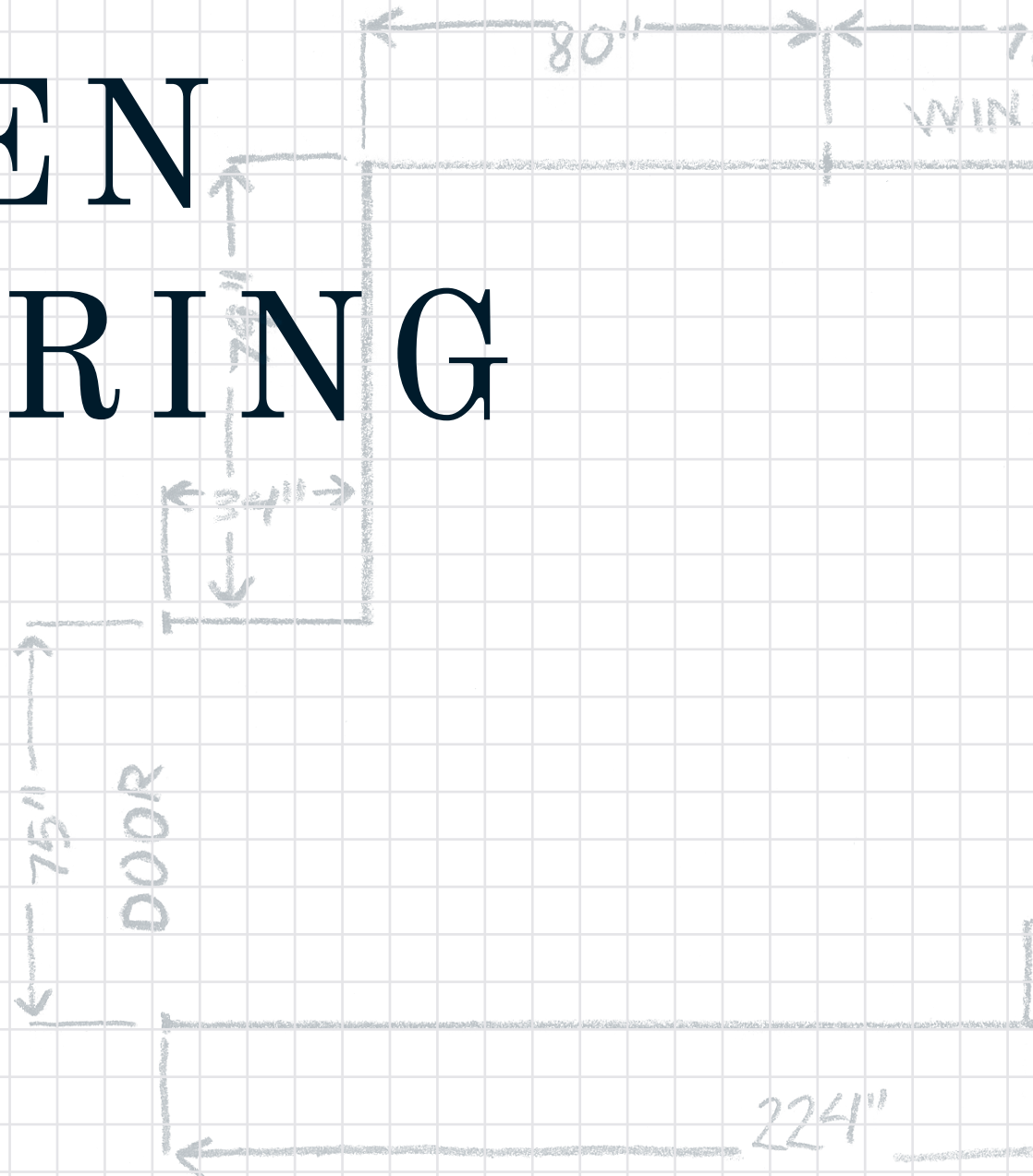


KITCHEN MEASURING GUIDE



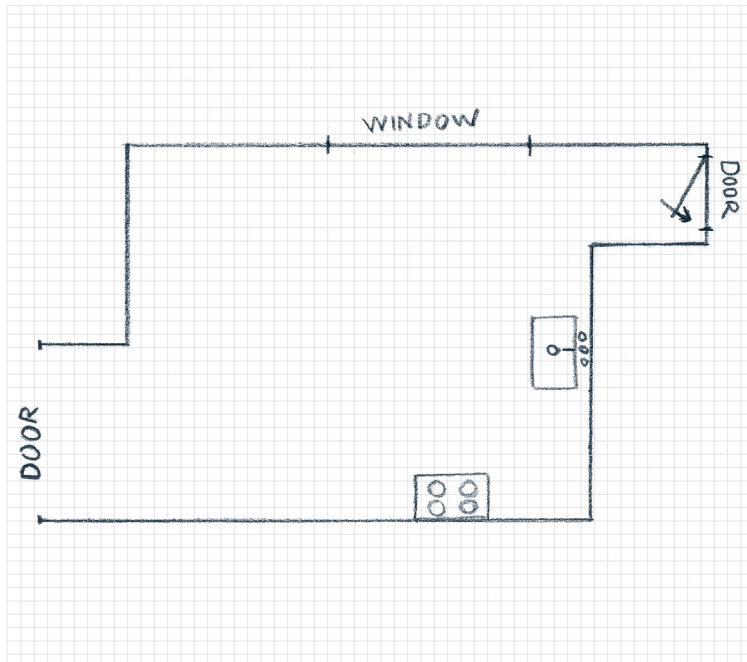
Measure Like A Pro

Measuring is an important step, but it doesn't have to be complicated. Follow this simple guide to make sure you can give your designer all the info they need to get started on your project.

You Will Need

- Tape measure** 16'-25'
- Pencil**
- Paper** *Grid paper works best*
- Camera or phone**
- Ladder or step stool**
- Helper** *Optional*

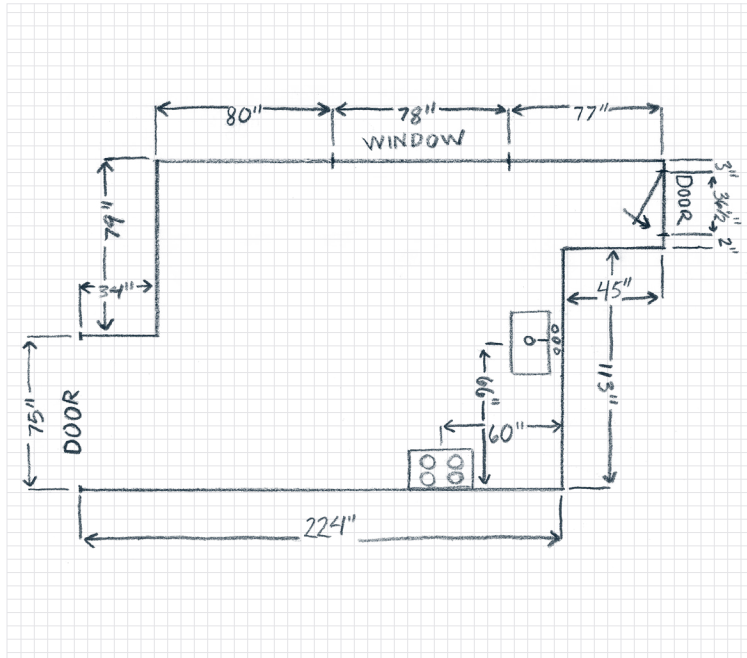
Start With A Sketch



Begin by drawing out the overall shape of the room, then add markings for all openings and obstacles, including:

- Doors**
- Windows**
- Electrical Outlets**
- Appliances**
- Other Obstacles**
Like pipe chases or radiators

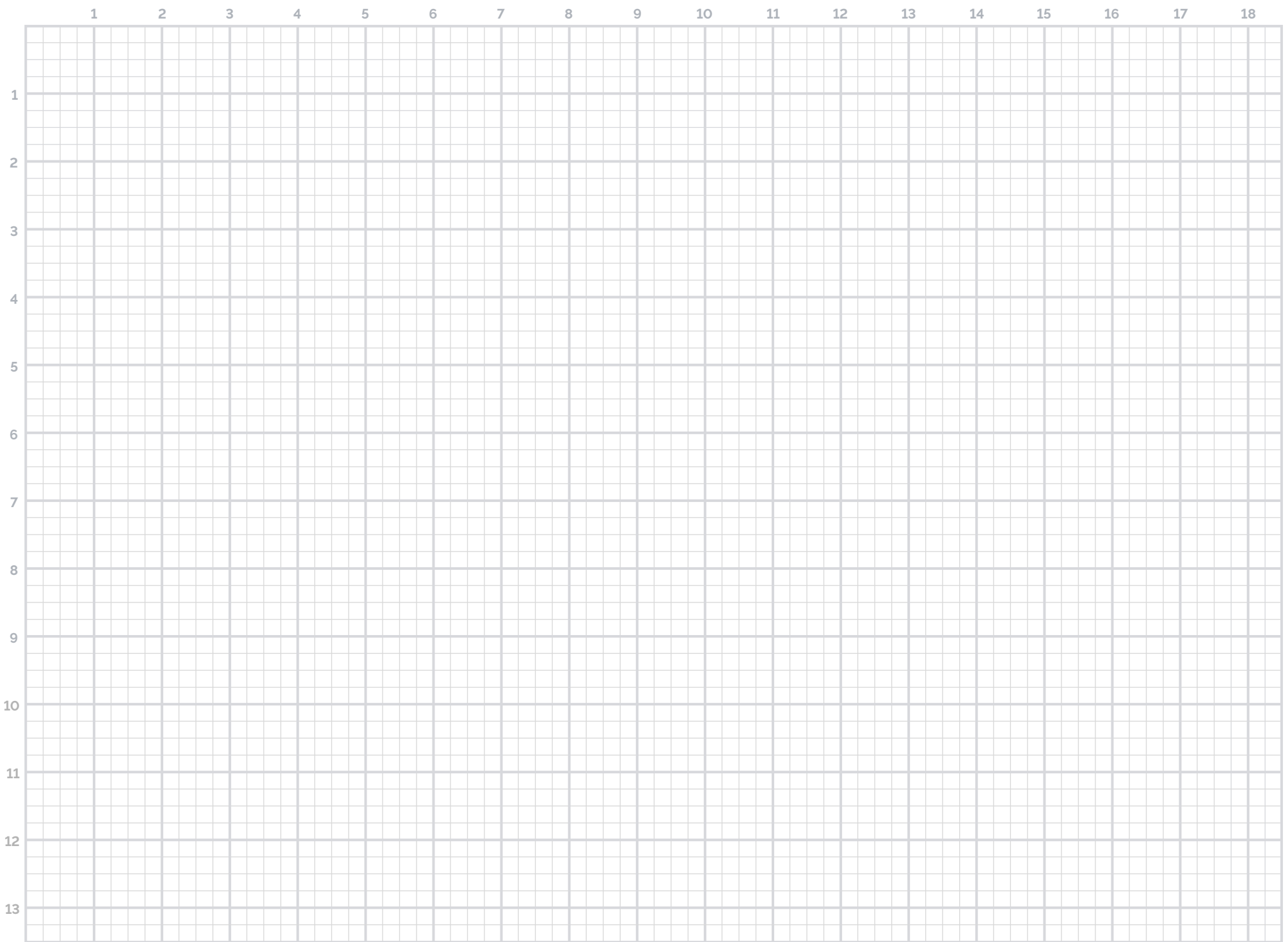
Measure Your Space



If possible, write down the model number of each appliance. You can usually find it on the inside of an appliance's opening or door.

Start in a corner and work clockwise, recording the following measurements on your drawing:

- Length of each wall**
- Ceiling height**
Measure in multiple places and use the lowest measurement
- Width and height of each door and window**
Include trim as part of the door/window
- Distance from floor to items like windows, electrical outlets and soffits**
- Height, width and depth of appliances/fixtures**
- Distance from each item to the next wall**



Each small square : 3" Each large square : 1'

Measurements

Windows	A	B	C	D
Width				
Height				
Floor to sill				

Ceiling Height	Soffit (WxHxD)			
Doors	A	B	C	D
Width				
Height				

Appliance	Model (To Be Used)	Size (WxHxD)	Hinge Position
Refrigerator			
Sink			
Range			
Cooktop			
Wall Oven			
Dishwasher			
Microwave (built in?)			
Trash Compactor			
Exhaust Hood			
Other			

Take Photos



A picture is worth a thousand words. Help your designer assess the space by taking the following pictures:

- Overall space
- Each wall
- Unique areas or obstacles

Notes:

<hr/> <hr/> <hr/> <hr/> <hr/> <hr/> <hr/> <hr/> <hr/> <hr/>	<hr/> <hr/> <hr/> <hr/> <hr/> <hr/> <hr/> <hr/> <hr/> <hr/>
---	---

Next Steps

Once you are finished, double check the measurements and take a photo of your drawing. Send it along with the room photos to your designer, and you're one step closer to your new kitchen!

Additional Resources

Thomasville Cabinetry

thomasvillecabinetry.com/get-started

The Home Depot

homedepot.com/b/Kitchen-Kitchen-Cabinets/N-5yc1vZas87